

SHORT REPORT

Open Access



# The protein kinase Cmk2 negatively regulates the calcium/calcineurin signalling pathway and expression of calcium pump genes *PMR1* and *PMC1* in budding yeast

Huihui Xu<sup>†</sup>, Tianshu Fang<sup>†</sup>, Hongbo Yan<sup>†</sup> and Linghuo Jiang<sup>\*†</sup> 

## Abstract

Through a genome-wide screen we have identified calcium-tolerant deletion mutants for five genes in the budding yeast *Saccharomyces cerevisiae*. In addition to *CNB1* and *RCN1* that are known to play a role in the calcium signalling pathway, the protein kinase gene *CMK2*, the sphingolipid homeostasis-related gene *ORM2* and the gene *SIF2* encoding the WD40 repeat-containing subunit of Set3C histone deacetylase complex are involved in the calcium sensitivity of yeast cells to extracellular calcium. *Cmk2* and the transcription factor *Crz1* have opposite functions in the response of yeast cells to calcium stress. Deletion of *CMK2* elevates the level of calcium/calcineurin signalling and increases the expression level of *PMR1* and *PMC1*, which is dependent on *Crz1*. Effects of *Cmk2* on calcium sensitivity and calcium/calcineurin signalling are dependent on its kinase activity. Therefore, *Cmk2* is a negative feedback controller of the calcium/calcineurin signalling pathway. Furthermore, the *cmk2 crz1* double deletion mutant is more resistant than the *crz1* deletion mutant, suggesting that *Cmk2* has an additional *Crz1*-independent role in promoting calcium tolerance.

**Keywords:** *Saccharomyces cerevisiae*, *Cmk2*, *Pmr1*, Calcineurin, *Crz1*, Calcium signalling

## Background

Calcium ions regulate many cellular processes in both prokaryotes and eukaryotes [1–5]. Regulation of intracellular calcium homeostasis and the calcium/calcineurin signalling pathway are highly conserved in eukaryotic cells [6, 7]. In the budding yeast *Saccharomyces cerevisiae*, cytosolic calcium homeostasis is regulated by  $\text{Ca}^{2+}$  transporters and sequestrators in the plasma and organellar membranes. Transient increases in cytosolic  $\text{Ca}^{2+}$  activate the calcium/calcineurin signalling pathway. Sustained  $\text{Ca}^{2+}$  accumulation in the cytosol is prevented by a  $\text{Ca}^{2+}$  sequestration system composed of the calcium pump *Pmc1* and the  $\text{Ca}^{2+}/\text{H}^{+}$  exchanger *Vcx1* in the vacuolar membrane as well as the calcium pump *Pmr1* and the  $\text{Ca}^{2+}/\text{H}^{+}$  exchanger *Gdt1* in the ER/Golgi secretory pathway [8–10]. In our recent

studies, we have demonstrated that *Rch1* is a novel negative regulator of calcium uptake in the plasma membrane in the budding yeast and the human yeast pathogen *Candida albicans* [11–15].

As a eukaryotic model organism, *S. cerevisiae* has been proven to be a valuable genetic tool to elucidate mechanisms regulating calcium homeostasis and calcium signalling in eukaryotic cells as well as to characterize gene–drug and pathway–drug interactions [16–20]. In our previous study, from all nonessential genes in the genome we have identified 120 genes that are involved in the tolerance of the budding yeast to high levels of extracellular calcium [21]. To explore genes involved in the sensitivity of yeast cells to extracellular calcium, we screened the same diploid deletion mutant set for calcium-tolerant gene deletion mutants. In this study, we have identified a total of five genes whose deletion leads to the tolerance of *S. cerevisiae* cells to high levels of extracellular calcium. Furthermore, we show that the protein kinase *Cmk2* is a negative feedback controller of the calcium/calcineurin signalling pathway.

\* Correspondence: [linghuojiang@sdut.edu.cn](mailto:linghuojiang@sdut.edu.cn)

<sup>†</sup>Huihui Xu, Tianshu Fang and Hongbo Yan contributed equally to this work. Laboratory for Yeast Molecular and Cell Biology, School of Agricultural Engineering and Food Science, Shandong University of Technology, Zibo, Shandong, China



## Methods

### Strains and reagents

The *S. cerevisiae* haploid wild type BY4741, the diploid wild type BY4743 strain and their isogenic deletion mutant sets used in this study were purchased from Invitrogen Inc. [21–23] (Table 1) Yeast cells were grown at 30 °C in YPD medium (1% yeast extract, 2% peptone, 2% glucose) or SD medium (0.67% yeast nitrogen base without amino acids, 2% glucose, and auxotrophic amino acids as needed). Chemicals were purchased from Sangon Biotech (Shanghai, China), except that cyclosporine A (CsA) and O-nitrophenyl-β-D-galactopyranoside (ONPG) were purchased from Sigma (Beijing, China) and the antibiotic nourseothricin was purchased from Golden Biotechnology Inc. (Missouri, USA).

### Genome-wide screen for calcium-tolerant mutations

For primary screens for calcium-tolerant strains, the collection of homozygous diploid deletion mutants of nonessential 4757 genes was replicated onto YPD plates with 0.4 M CaCl<sub>2</sub> and YPD plates without supplemented CaCl<sub>2</sub> (as controls), respectively. These plates were incubated at 30 °C for 2–3 days. A mutant with a relative colony size increased by more than 30% as compared to the average size of its surrounding mutants on YPD plates containing 0.4 M CaCl<sub>2</sub> but not on YPD plates without supplemented CaCl<sub>2</sub>, was identified as a potential calcium-tolerant mutant. Primary screen was repeated two times. Tolerant mutants

**Table 1** *S. cerevisiae* strains used in this study

Strain	Genotype	Source
BY4743	<i>MATa/a his3Δ/ his3Δ1 leu2Δ0/leu2Δ0 met15Δ0/ met15Δ0 ura3Δ0/ura3Δ0</i>	Invitrogen Inc.
BY4743	<i>cmk2::kanMX4/cmk2::kanMX4</i>	Invitrogen Inc.
BY4743	<i>cnb1::kanMX4/cnb1::kanMX4</i>	Invitrogen Inc.
BY4743	<i>orm2::kanMX4/orm2::kanMX4</i>	Invitrogen Inc.
BY4743	<i>rcn1::kanMX4/rcn1::kanMX4</i>	Invitrogen Inc.
BY4743	<i>sif2::kanMX4/sif2::kanMX4</i>	Invitrogen Inc.
BY4741	<i>MATa his3Δ1 leu2Δ0 met15Δ0 ura3Δ0</i>	Invitrogen Inc.
BY4741	<i>cmk1::kanMX4</i>	Invitrogen Inc.
BY4741	<i>cmk2::kanMX4</i>	Invitrogen Inc.
BY4741	<i>cnb1::kanMX4</i>	Invitrogen Inc.
BY4741	<i>vcx1::kanMX4</i>	Invitrogen Inc.
BY4741	<i>crz1::kanMX4</i>	Invitrogen Inc.
BY4741	<i>cmk2::natMX4</i>	This study
BY4741	<i>vcx1::natMX4</i>	This study
BY4741	<i>cmk2::natMX4 cmk1::kanMX4</i>	This study
BY4741	<i>cmk2::natMX4 cnb1::kanMX4</i>	This study
BY4741	<i>cmk2::natMX4 vcx1::kanMX4</i>	This study
BY4741	<i>cmk2::natMX4 crz1::kanMX4</i>	This study
BY4741	<i>vcx1::natMX4 cnb1::kanMX4</i>	This study

were subjected to a secondary screen by a serial dilution assay method as described [22, 24]. The suppressive effects of cyclosporine A on the phenotypes of calcium-tolerant mutants were examined by supplementing 50 μg/ml CsA into YPD plates with or without CaCl<sub>2</sub> [25].

### Construction of double-gene deletion mutants

To study the interaction between *CMK2* and genes encoding components of the calcium/calcineurin signalling pathway in calcium sensitivity, we created their double-gene deletion mutants in the BY4741 genetic background. First, *kanMX4* markers in single-gene deletion mutants for *CMK2* and *Vcx1* (*cmk2::kanMX4* and *vcx1::kanMX4*) were replaced by the *natMX4* in the plasmid p4339 to generate *cmk2::natMX4* and *vcx1::natMX4* strains as described previously [26]. The *cmk2::natMX4* cassette was PCR amplified from the genomic DNA of the *cmk2::natMX4* strain with a pair of primer CMK2-F (5' CGATATTGTT CAAGATCAGC AG 3)/CMK2-R (5' ATGCCATGAA GTGTAGCTGC 3'), which locate 100-bp upstream and downstream, respectively, of the open reading frame (ORF) of the *CMK2* gene, and used for replacing the *CMK2* ORFs in *kanMX4* mutants for target genes to generate their double-gene deletion mutants. The deletion of *CMK2* gene in these double-gene deletion mutants was confirmed by PCR amplification with detection primer pair CMK2-DF (5' GAGGCTTATC TTAGAACCC 3')/CMK2-DR (5' AGAACCCGTT AGGC AACTAC 3'), which flank the CMK2-F and CMK2-R. Similarly, the double-gene deletion mutant between *CNB1* and *Vcx1* was constructed (Table 1).

### Galactosidase activity assay

To measure the calcineurin dependent response element (CDRE)-driven β-galactosidase activity in the wild type and the *cmk2/cmk2* mutant, we integrated the *Stu1*-pre-cut plasmid DNA containing the 4×CDRE-*lacZ* reporter into the *AUR1* locus of these strains as described [12, 27]. The *PMc1-lacZ* reporter and *PMr1-lacZ* reporter were described in our previous study [28]. The β-galactosidase activity was determined using the substrate ONPG as described [29–31]. Data are mean ± SD from six independent experiments.

### DNA manipulation

To clone the full-length gene *CMK2* into the centromeric vector pHAC111 [26], a DNA fragment containing the 776-bp promoter, the 1344-bp open reading frame (ORF) and the 341-bp terminator region of *CMK2* was amplified with a pair of primers ScCMK2-clonF (5' gtagggtag catgcctgca gGACACAATG ATAGGCACAA CGC 3'; lower-case sequence from the pHAC111 vector) and ScCMK2-clonR (5' aaaacgacgg ccagtgtaatt cTGACATTGA CGTTAGCGAT GACT 3'; lower-case

sequence from pHAC111), and cloned between *Pst*I and *Eco*RI sites in pHAC111 through homologous recombination, which yielded pHAC111-CMK2.

Next, we amplified the DNA fragment CMK2-UP containing the 842-bp promoter and the 225-bp *CMK2* ORF region upstream of the AAG codon (lysine) with primers ScCMK2-mutant-F1 (5' CCTTTCTAGA GCGT TTTCTG TG 3') and ScCMK2-mutant-R1 (5' CAAT AAGATG GCTATAGCAA CATCTTCATT TGTGG 3'; underlined is the mutated codon of AAG). Similarly, the DNA fragment CMK2-DOWN containing the 1115-bp *CMK2* ORF region downstream of the AAG codon and the 414-bp terminator was PCR amplified with primers ScCMK2-mutant-F2 (5' GAAGATGTTG CTATAGC-CAT CTTATTGAAG AAGGCATTGC 3'; underlined is the mutated codon of AAG) and ScCMK2-mutant-R2 (5' CTCAGAGAAG AACCACGGTG 3'). The two fragments CMK2-UP and CMK2-DOWN were fused together by PCR with primers ScCMK2-clonF and ScCMK2-clonR, and the fused product was cloned between *Pst*I and *Eco*RI sites in pHAC111 through homologous recombination, yielding pHAC111-CMK2M, expressing a point (K76A) mutant form of Cmk2 under its own promoter. All constructs were confirmed by DNA sequencing.

#### Statistical analysis

Data are presented as means  $\pm$  SD. Significant differences were analyzed by GraphPad Prism version 4.00 (USA). *P* values of  $<0.05$  were considered to be significant.

## Results

### Screen for calcium-tolerant gene deletion mutants

In our previous study [21], through a genome-wide approach we have identified 120 genes that are involved in the tolerance of *S. cerevisiae* cells to high levels of extracellular calcium. To explore genes involved in the sensitivity of yeast cells to extracellular calcium, we screened the same deletion library for calcium-tolerant gene deletion mutants. As a result, we revealed that deletion of *CNB1*, *RCN1*, *CMK2*, *ORM2* or *SIF2* caused yeast cells to be tolerant to 0.4 M  $\text{CaCl}_2$ , and these phenotypes were more dramatic in the presence of 0.6 M  $\text{CaCl}_2$  (Fig. 1). The calcium tolerant-phenotypes of yeast cells lacking *RCN1*, *ORM2* or *SIF2* on YPD plate containing 0.4 M  $\text{CaCl}_2$  could be slightly suppressed by the addition of the cyclosporin A (CsA), the specific inhibitor of calcineurin (Fig. 1).

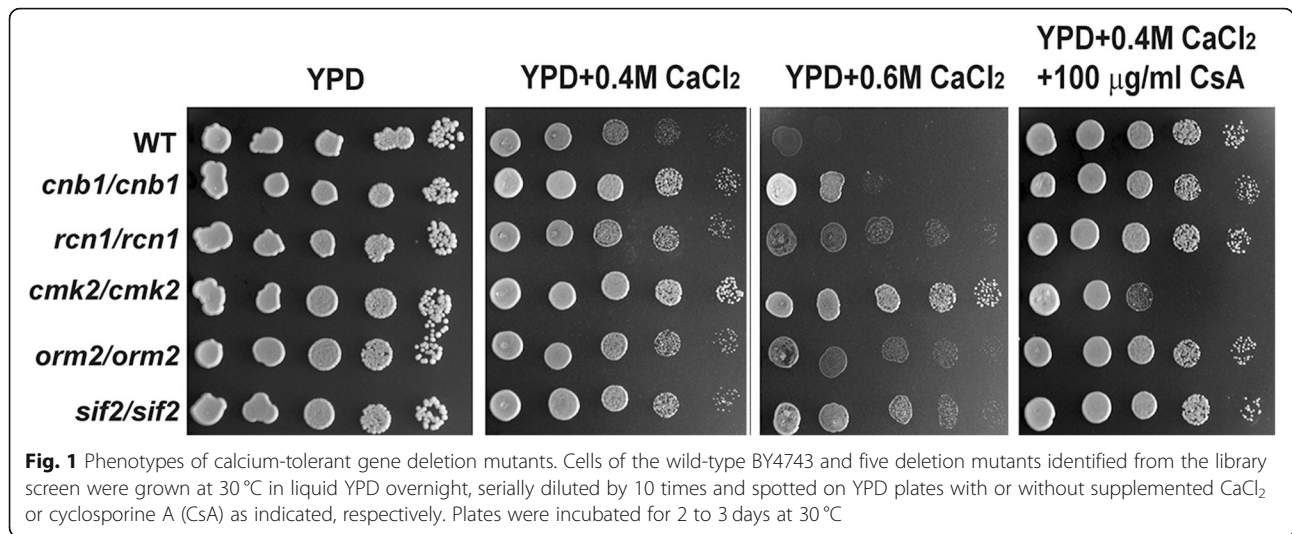
*RCN1* encodes a protein involved in calcineurin regulation during calcium signalling and has similarity to human DSCR1 that is found in the Down Syndrome candidate region [32]. *CNB1* encodes a regulatory subunit of calcineurin, a  $\text{Ca}^{2+}$ /calmodulin-regulated type 2B

protein phosphatase, which dephosphorylates the transcription factor Crz1, and promotes its nuclear localization [9]. Our observation that deletion of *CNB1* leads to a calcium-tolerant phenotype in the wild type BY4743 background is consistent with previous studies [33, 34], showing that inactivation of calcineurin including deletion of *CNB1* restores the calcium-tolerance of yeast cells lacking *PMCI*, since calcineurin decreases calcium tolerance of *pmc1* cells by inhibiting the function of the vacuolar  $\text{H}^+/\text{Ca}^{2+}$  exchanger Vcx1. Therefore, it is not surprising to note that the difference in calcium sensitivity between the wild type and the *cnb1/cnb1* mutant is abolished by CsA, since it suppresses the function of calcineurin in the wild type (Fig. 1). However, interestingly, yeast cells lacking *CMK2* were sensitive to calcium stress in the presence of CsA as compared to the wild type (Fig. 1). This suggests that the calcium tolerance due to deletion of *CMK2* requires the presence of a functional calcineurin.

### Calcium tolerance of *cmk2* cells requires the calcium/calcineurin signalling in response to high levels of extracellular calcium

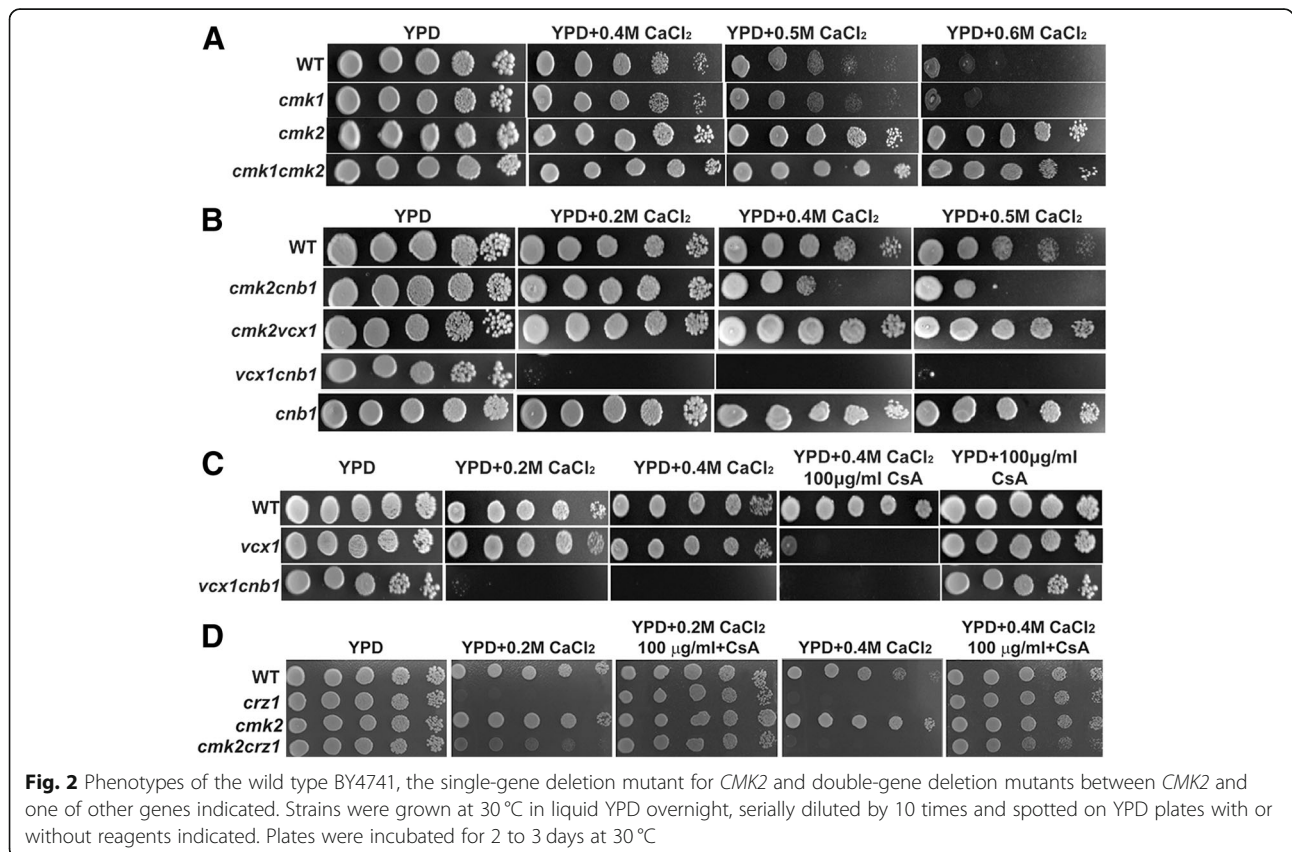
As homologs of mammalian Cam Kinase II, Cmk2 and its paralog Cmk1 are calmodulin-dependent protein kinases (CaMK) that play a role in stress response in *S. cerevisiae* [35, 36]. The yeast CaMK, encoded by both *CMK1* and *CMK2*, and the calcineurin act independently in promoting survival of pheromone-induced growth arrest [35]. However, deletion of *CMK1* did not lead to a calcium-tolerant phenotype of the wild type BY4743 cells as deletion of *CMK2*, neither did affect the calcium-tolerant phenotype of yeast cells lacking *CMK2* (Fig. 2a). This indicates only Cmk2, but not Cmk1, is involved in the response of yeast cells to high levels of external calcium. To examine if the calcium-tolerant phenotype of yeast cells lacking *CMK2* is related to the calcium/calcineurin signalling pathway, we constructed double-gene deletion mutants between *CMK2* and genes encoding various components of the calcium/calcineurin signalling pathway.

Although deletion of *CNB1* causes yeast cells to be calcium-tolerant in the haploid BY4741 background as in the diploid BY4743 background, further deletion of *CNB1* led to a calcium-sensitive phenotype for yeast cells lacking *CMK2* (Fig. 2b). In contrast, deletion of *VCX1* did not have an impact on the calcium sensitivity of the wild type BY4741 cells harboring a functional calcineurin, and neither did on the calcium-tolerant phenotype for yeast cells lacking *CMK2* (Fig. 2b and c). Like in yeast cells lacking *CMK2*, further deletion of *CNB1* also led to a calcium-sensitive phenotype for yeast cells lacking *VCX1* (Fig. 2c). As expected [10], deletion of *CRZ1* alone led to a hypersensitivity of



BY4741 cells to calcium stress (Fig. 2b). Yeast cells lacking both *CRZ1* and *CMK2* showed a hypersensitive phenotype on YPD plate containing 0.4 M CaCl<sub>2</sub> with a similar degree to cells lacking *CRZ1* alone. In contrast, yeast cells lacking both *CRZ1* and *CMK2* showed a sensitive phenotype on YPD plate containing 0.2 M CaCl<sub>2</sub> in a less degree than cells lacking *CRZ1* alone (Fig. 2d). However, all these phenotypes could be suppressed by

the specific inhibitor of calcineurin, CsA (Fig. 2d). This indicates that *Cmk2* and *Crz1* have independent and opposite functions in the calcium sensitivity of yeast cells. Taken together, our data suggest that the calcium tolerance due to deletion of *CMK2* is dependent on *Crz1* under high concentrations of calcium, but is independent of *Crz1* under lower concentrations of calcium.



**Deletion of *CMK2* leads to increased expression of *PMR1* and *PMC1* due to activation of the calcium/calceineurin signalling**

Next, we examined if deletion of *CMK2* would activate the calcium/calceineurin signalling. We examined the calcium-dependent response element (CDRE)-*lacZ* activity in the wild type and the *cmk2* mutant. As compared to the wild type, the CDRE-*lacZ* activity in the *cmk2* mutant was significantly increased in the absence or presence of 0.2 M CaCl<sub>2</sub> (Fig. 3a). This suggests that deletion of *CMK2* elevates the activation levels of the calcium/calceineurin signaling independent of calcium stress.

Activation of calcium/calceineurin signalling induces the expression of *PMR1* and *PMC1*, but not *VCX1* [21, 34, 37]. Next, we examined the expression of *PMR1* and *PMC1* using their *lacZ* reporters in the wild type, the *crz1* mutant and the *cmk2* mutant. The *lacZ* activities of *PMR1* and *PMC1* were induced in the wild type in response to 0.2 M CaCl<sub>2</sub> (Fig. 3b and c). This is consistent with the previous observation [34]. In the absence of 0.2 M CaCl<sub>2</sub>, there was no significant difference in the *lacZ* activities of *PMR1* or *PMC1* between the wild type and the *crz1* mutant, but there was a significant increase in the *lacZ* activities of *PMR1* and *PMC1* in the *cmk2* mutant as compared to the wild type (Fig. 3b and c).

In the presence of 0.2 M CaCl<sub>2</sub>, there was a significant decrease in the *lacZ* activities of both *PMR1* or *PMC1* in the *crz1* mutant as compared to the wild type (Fig. 3b and c). In contrast, there was a significant increase in the *lacZ* activity of both *PMR1* and *PMC1*, in the *cmk2* mutant as compared

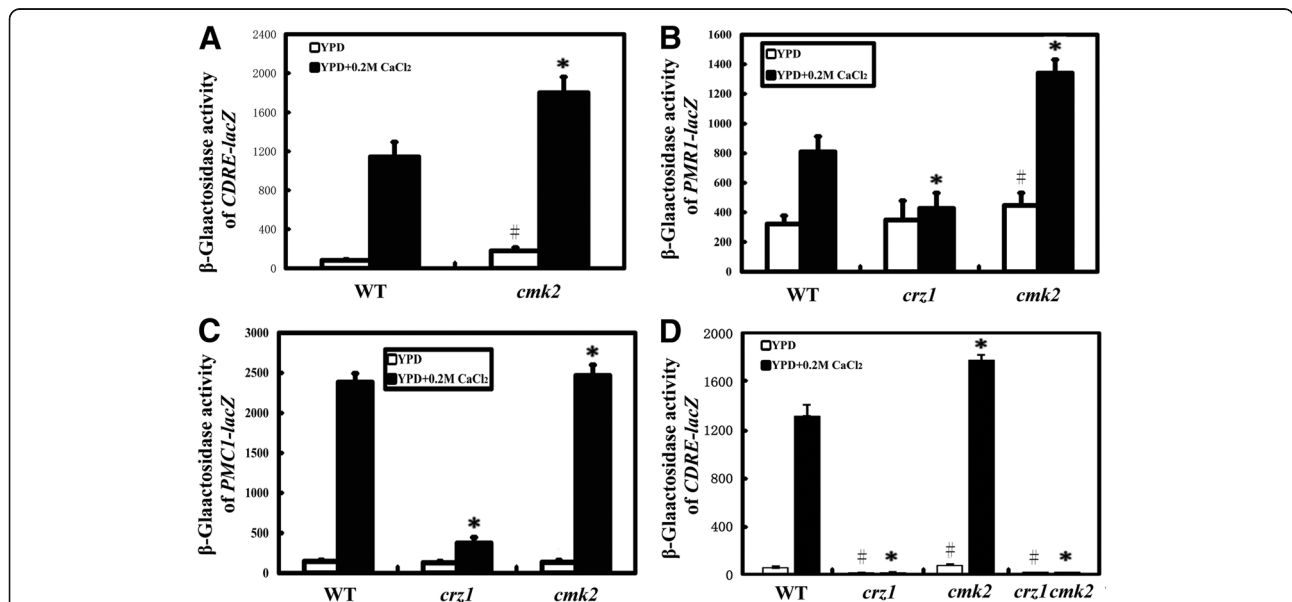
to the wild type (Fig. 3b and c). Therefore, deletion of *CMK2* increase the expression level of both *PMR1* and *PMC1*.

**Enhanced CDRE-*lacZ* activity due to deletion of *CMK2* is dependent on *Crz1***

As we described above, expression of both CDRE-*lacZ* and *PMR1-lacZ* reporters was increased in the absence of added calcium in the *cmk2* mutant as compared to the wild type (Fig. 3a and b). To examine if this effect is due to enhanced *Crz1* activity, we measured the activity of CDRE-*lacZ* in the *crz1*, the *cmk2* and the *crz1/cmk2* mutants. As expected, in the absence or presence of 0.2 M CaCl<sub>2</sub>, the activity of CDRE-*lacZ* was almost abolished in both the *crz1* mutant and the *crz1/cmk2* mutant, albeit increased in the *cmk2* mutant (Fig. 3d). In addition, the activity of CDRE-*lacZ* was significantly lower in either the *crz1* mutant or the *crz1/cmk2* mutant than the wild type strain in the absence of added calcium, although no significant difference in the activity of CDRE-*lacZ* was observed between the *crz1* mutant and the *crz1/cmk2* mutant in the absence or presence of 0.2 M CaCl<sub>2</sub> (Fig. 3d). Taken together, these data suggest that the enhanced CDRE-*lacZ* activity in the *cmk2* mutant was dependent on *Crz1* in the absence or presence of calcium stress and that a basal level of *Crz1* activity is present in yeast cells growing in YPD medium.

**Effect of *Cmk2* on the CDRE-*lacZ* activity is dependent on its catalytic activity**

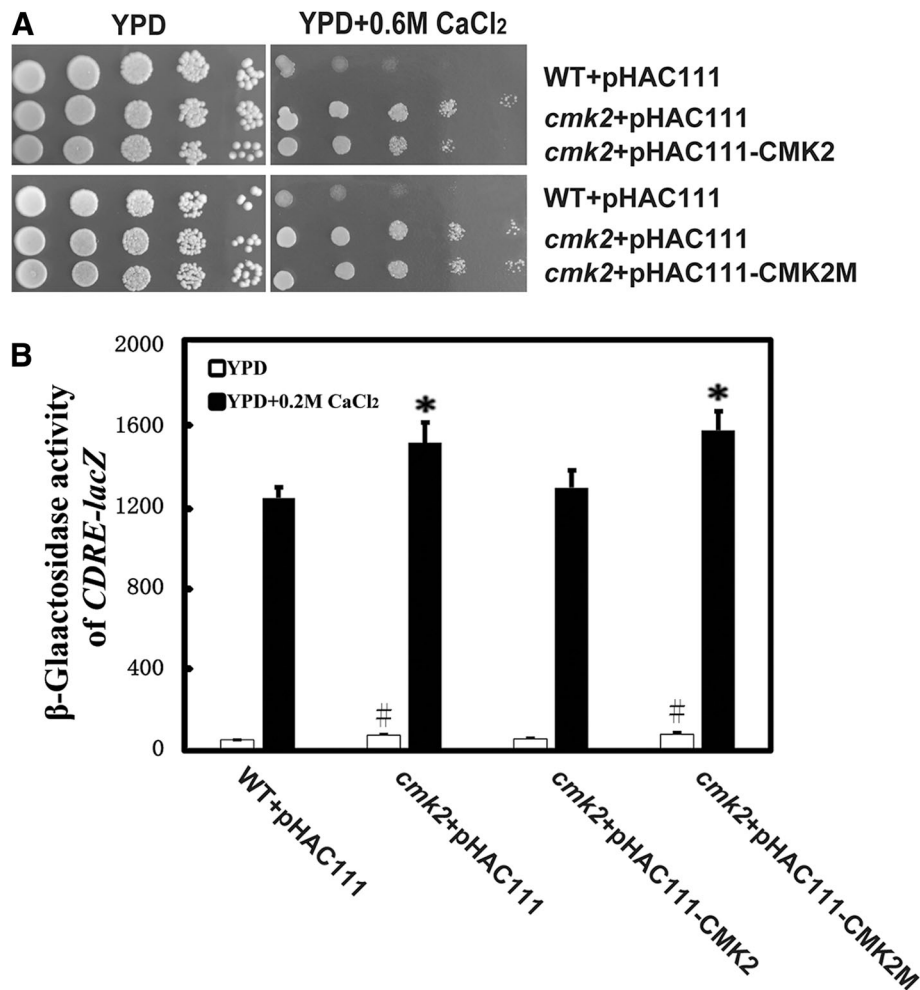
We examined if the catalytic activity of the protein kinase *Cmk2* is responsible for its suppressive effect on the



**Fig. 3** Deletion of *CMK2* increases the activation level of calcium/calceineurin signaling and the expression level of *PMR1*. Galactosidase activities of 4xCDRE-*lacZ* (a and d), *PMR1-lacZ* (b) or *PMC1-lacZ* (c) in the wild-type (WT), the *cmk2* mutant and the *crz1* mutant growing in log phase. Symbols # and \* show statistically significant differences ( $P < 0.05$ ) between the wild type and each of the two mutants in the absence or presence of 0.2 M CaCl<sub>2</sub>, respectively. Values were means of six independent experiments

CDRE-*lacZ* activity. The critical lysine residue in ScCmk2 was identified from the amino acid alignment between *S. cerevisiae* ScCmk2, *Schizosaccharomyces pombe* SpCmk2 [38] and *S. cerevisiae* ScRck2 [26, 39] (Additional file 1: Figure S1). We first constructed the plasmids pHAC111-CMK2 and pHAC111-CMK2M, expressing the wild type Cmk2 and its kinase-dead point mutant (K76A) variant of Cmk2. Introduction of pHAC111-CMK2, but not pHAC111-CMK2M, partially suppressed the calcium-tolerant phenotype of the *cmk2* mutant (Fig. 4a). This suggests that the catalytic activity of Cmk2 is required for the function of Cmk2 in the sensitivity of yeast cells to high levels of extracellular calcium stress.

Next, we introduced the vector pHAC111 to the wild type BY4741 with the CDRE-*lacZ* reporter and the *cmk2* mutant with the CDRE-*lacZ* reporter, respectively. In addition, pHAC11-CMK2 and pHAC11-CMK2M were introduced into the *cmk2* mutant strain with the CDRE-*lacZ* reporter, respectively. As expected, in the absence or presence of 0.2 M CaCl<sub>2</sub>, the *cmk2* mutant carrying the pHAC111 vector showed a higher CDRE-*lacZ* activity than the wild type carrying pHAC111 (Fig. 4b). Introduction of pHAC11-CMK2, but not pHAC11-CMK2M, suppressed the enhanced effect of *cmk2* deletion on the CDRE-*lacZ* activity in the absence or presence of 0.2 M CaCl<sub>2</sub> (Fig. 4b). This indicates that the negative effect of Cmk2 on the CDRE-*lacZ* activity is dependent on its kinase activity.



**Fig. 4** Effects of Cmk2 on both calcium sensitivity and CDRE-*lacZ* activity are dependent on its catalytic activity. (a), cells of the wild-type BY4741 and the *cmk2* mutant carrying the pHAC111 vector, pHAC111-CMK2 or pHAC111-CMK2M were grown at 30 °C in liquid SD-LEU medium overnight, serially diluted by 10 times and spotted on YPD plates with or without 0.6 M CaCl<sub>2</sub>, respectively. Plates were incubated for 2 to 3 days at 30 °C. (b), Galactosidase activities of 4xCDRE-*lacZ* in the wild-type (WT) BY4741 and the *cmk2* mutant, carrying the pHAC111 vector, pHAC111-CMK2 or pHAC111-CMK2M as indicated. They were grown at 30 °C in liquid SD-LEU medium overnight before they were inoculated to, and grown in, YPD medium to log phase. Cells were further grown in the absence or presence of 0.2 M CaCl<sub>2</sub> for 2 h before they were collected for protein extraction and *lacZ* activity assay. Symbols # and \* show statistically significant differences (*P* < 0.05) between the wild type and each of other strains in the absence or presence of 0.2 M CaCl<sub>2</sub>, respectively. Values were means of six independent experiments

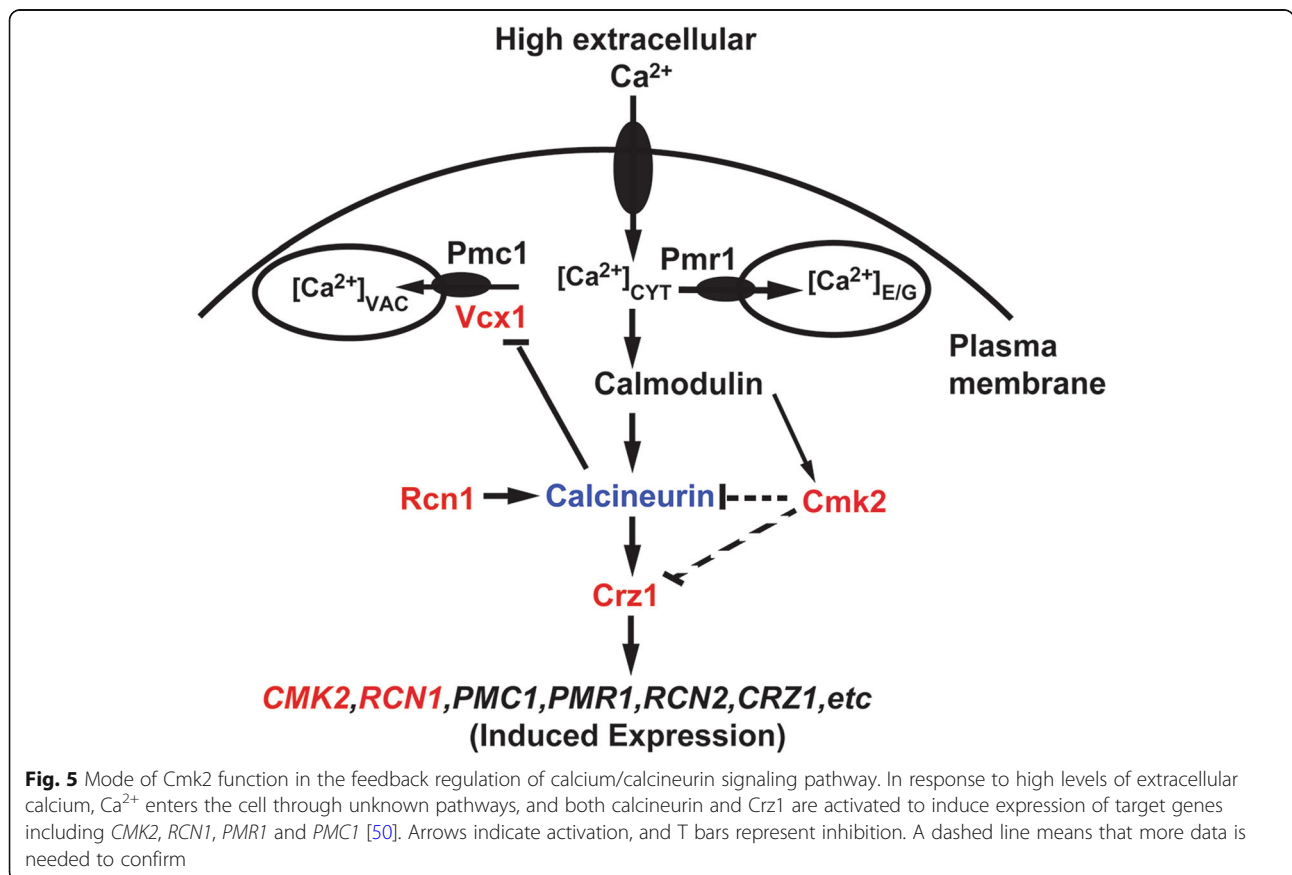
**Discussion**

Through a chemical genetic screen, we have identified five genes, *CNBI*, *RCN1*, *ORM2*, *SIF2* and *CMK2*, that are involved in the sensitivity of *S. cerevisiae* cells to high levels of extracellular calcium. Two genes, both *CNBI* and *RCN1*, encode regulators of calcineurin. Calcineurin not only induces the expression of *PMC1* and *PMR1* through the action of the transcription factor Crz1, but also inhibits in a Crz1-independent fashion the activity of Vcx1, the high capacity, low affinity vacuolar Ca<sup>2+</sup> exchanger [37, 40]. The calcium-tolerance of yeast cells lacking *CNBI* is likely due to the release of the inhibitory effect of calcineurin on Vcx1 activity, which is supported by our observation that further deletion of *VCX1* reversed the phenotype of cells lacking *CNBI* to be hypersensitive to calcium stress with a similar degree to that of cells lacking *VCX1* in the presence of CsA (Fig. 2c).

*ORM2* encodes a regulator of the sphingolipid homeostasis. Our finding is consistent with previous observations that sphingolipids play roles in calcium homeostasis, protein trafficking/exocytosis, longevity and cellular aging, nutrient uptake, and the interaction of sphingolipids and antifungal drugs in *S. cerevisiae* [41]. In mammalian cells, sphingosine 1-phosphate is a signalling lipid known to be

involved in calcium homeostasis [42–44]. *SIF2* encodes the WD40 repeat-containing subunit of Set3C histone deacetylase (HDAC) complex [45]. The Set3C binds histone H3 dimethylated at lysine 4 to mediate deacetylation of histones in 5'-transcribed regions [46]. Interestingly, the chaperone mammalian relative of DnaJ (Mrj) decreases the occupancy of nuclear factor of activated T cells (NFAT), the mammalian functional counterpart of yeast Crz1, on the tumor necrosis factor-alpha promoter in cardiomyocytes in an HDAC-dependent manner [47]. A similar role might exist for Set3C on the regulation of Crz1 in gene transcription in response to calcium stress.

*CMK2* encodes a calmodulin-dependent protein kinase, and expression of *CMK2* is induced by the calcium/calcineurin signalling pathway [48, 49]. Yeast cells lacking *CMK2* are tolerant to high levels of external calcium, while cells lacking the *CRZ1* are calcium-sensitive. Therefore, Cmk2 and Crz1 have opposite functions in the calcium sensitivity of yeast cells. In addition, we show here that deletion of *CMK2* elevates the calcium/calcineurin signalling and increases the expression level of *PMR1* and *PMC1* in response to calcium stress (Fig. 3). The effects of Cmk2 on calcium sensitivity and calcium/calcineurin signalling are dependent on its catalytic activity (Fig. 4). Taken together, these data suggest



**Fig. 5** Mode of Cmk2 function in the feedback regulation of calcium/calcineurin signaling pathway. In response to high levels of extracellular calcium, Ca<sup>2+</sup> enters the cell through unknown pathways, and both calcineurin and Crz1 are activated to induce expression of target genes including *CMK2*, *RCN1*, *PMR1* and *PMC1* [50]. Arrows indicate activation, and T bars represent inhibition. A dashed line means that more data is needed to confirm

that Cmk2 functions as a negative feedback controller for the calcium/calcineurin signalling pathway, which is mediated by Crz1 through calcineurin in response to high levels of extracellular calcium stress (Fig. 5). How Cmk2 regulates the calcium signalling pathway remains to be determined. A plausible possibility would be that Cmk2 directly phosphorylates and negatively regulates calcineurin or Crz1 (Fig. 5). In contrast, Rcn1 is a feedback controller of calcineurin with dual effects [48, 50]. Another possibility is that Cmk2 indirectly affects Set3C, which in turn regulates the activity of Crz1.

Interestingly, we have observed that the *cmk2 crz1* double deletion mutant is more tolerant to 0.2 M CaCl<sub>2</sub>, albeit not to a higher level of calcium (0.4 M CaCl<sub>2</sub>), than the *crz1* deletion mutant (Fig. 2d). This indicates that Cmk2 has an additional function in calcium tolerance, which is independent of Crz1. However, supplementation of CsA in the medium suppresses the calcium sensitivity of both the *crz1* and *cmk2/crz1* mutants at both 0.2 M CaCl<sub>2</sub> and 0.4 M CaCl<sub>2</sub> (Fig. 2d). This indicates that the additional Crz1-independent function of Cmk2 is dependent on calcineurin function (Fig. 5). This additional function could be mediated by the Vcx1, whose activity can be inhibited by calcineurin [34]. Nevertheless, the direct phosphorylation and thereby regulation of Vcx1 activity by Cmk2 could not be excluded. This might also explain what we have observed that higher promoter activities of CDRE-*lacZ* and PMR1-*lacZ* in the *cmk2* mutant than those in the wild type strain under normal growth conditions (Fig. 3), when the calcium/calcineurin signaling pathway is not activated.

## Additional file

**Additional file 1: Figure S1.** Amino acid sequence comparison between ScCMK2, SpCMK2 and ScRCK2. (PDF 88 kb)

## Abbreviations

CaMK: Calmodulin-dependent protein kinase; CDRE: Calcineurin dependent response element; CsA: Cyclosporine A; ER: Endoplasmic reticulum; NFAT: Nuclear factor of activated T cells; PCR: Polymerase chain reaction; YPD: Yeast peptone dextron

## Acknowledgements

The author is grateful to Yoshio Araki for kindly providing reagents. This work was carried out with technical support from Yunying Zhao, Yan Zhang, Jingcai Du, Jingwen Zhao, Bing Xiong and Chunlei Cao, and financially supported by grants from the National Natural Science Foundation of China to LJ (No. 81571966 and No. 81371784).

## Funding

This work was funded by the National Natural Science Foundation of China to LJ (No. 81571966 and No. 81371784).

## Availability of data and materials

All data generated or analyzed during this study are included in this published article.

## Authors' contributions

HX, TF and HY carried out experiments and analyzed the data, LJ designed the study and wrote the manuscript and analyzed the data. All authors read and approved the final manuscript.

## Authors' information

N/A.

## Ethics approval and consent to participate

N/A.

## Consent for publication

Author approved the final manuscript.

## Competing interests

The authors declare that they have no competing interest.

## Publisher's Note

Springer Nature remains neutral with regard to jurisdictional claims in published maps and institutional affiliations.

Received: 11 September 2018 Accepted: 14 January 2019

Published online: 21 January 2019

## References

- Tang RJ, Luan S. Regulation of calcium and magnesium homeostasis in plants: from transporters to signaling network. *Curr Opin Plant Biol.* 2017;39:97–105.
- Bond R, Ly N, Cyert MS. The unique C terminus of the calcineurin isoform CNAβ1 confers non-canonical regulation of enzyme activity by Ca<sup>2+</sup> and calmodulin. *J Biol Chem.* 2017;292:16709–21.
- Espeso EA. The CRaZy calcium cycle. *Adv Exp Med Biol.* 2016;892:169–86.
- Plattner H, Verkhatsky A. The ancient roots of calcium signalling evolutionary tree. *Cell Calcium.* 2015;57:123–32.
- Medler KF. Calcium signaling in taste cells: regulation required. *Chem Senses.* 2010;35:753–65.
- Serra-Cardona A, Canadell D, Arino J. Coordinate responses to alkaline pH stress in budding yeast. *Microb Cell.* 2015;2:182–96.
- Cui J, Kaandorp JA, Sloot PM, Lloyd CM, Filatov MV. Calcium homeostasis and signaling in yeast cells and cardiac myocytes. *FEMS Yeast Res.* 2009;9:1137–47.
- Colinet AS, Thines L, Deschamps A, Flegal G, Demaegd D, Morsomme P. Acidic and uncharged polar residues in the consensus motifs of the yeast Ca<sup>2+</sup> transporter Gdt1p are required for calcium transport. *Cell Microbiol.* 2017;19(7). <https://doi.org/10.1111/cmi.12729>.
- Cyert MS, Philpott CC. Regulation of cation balance in *Saccharomyces cerevisiae*. *Genetics.* 2013;193:677–713.
- Cyert MS. (2003) Calcineurin signaling in *Saccharomyces cerevisiae*: how yeast go crazy in response to stress. *Biochem. Biophys. Res. Commun.* 2003; 311:1143–50.
- Jiang L, Xu D, Hameed A, Fang T, Bakr Ahmad Fazili A, Asghar F. The plasma membrane protein Rch1 and the Golgi/ER calcium pump Pmr1 have an additive effect on filamentation in *Candida albicans*. *Fung Genet Biol.* 2018;115(1–8).
- Zhao Y, Yan H, Happeck R, Peiter-Volk T, Xu H, Zhang Y, Peiter E, van Oostende Triplet C, Whiteway M, Jiang L. The plasma membrane protein Rch1 is a negative regulator of cytosolic calcium homeostasis and positively regulated by the calcium/calcineurin signaling pathway in budding yeast. *Eur J Cell Biol.* 2016;95:164–74.
- Xu D, Cheng J, Cao C, Wang L, Jiang L. Genetic interactions between Rch1 and the high-affinity calcium influx system Cch1/Mid1/Ecm7 in the regulation of calcium homeostasis, drug tolerance, hyphal development and virulence in *Candida albicans*. *FEMS Yeast Res* 2015;15(7). pii: fov079.
- Alber J, Jiang L, Geyer J. CaRch1p does not functionally interact with the high-affinity Ca<sup>2+</sup> influx system (HACS) of *Candida albicans*. *Yeast.* 2013;30:449–57.
- Jiang L, Alber J, Wang J, Du W, Li X, Geyer J. The *Candida albicans* plasma membrane protein Rch1p a member of the vertebrate SLC10 carrier family, is a novel regulator of cytosolic Ca<sup>2+</sup> homeostasis. *Biochem J.* 2012;444:497–502.



16. Jiang L, Wang L, Fang T, Papadopoulos V. Disruption of ergosterol and tryptophan biosynthesis, as well as cell wall integrity pathway and the intracellular pH homeostasis, lead to mono-(2-ethylhexyl)-phthalate toxicity in budding yeast. *Chemosphere*. 2018;206:643–54.
17. Jiang L, Cao C, Zhang L, Lin W, Xia J, Xu H, Zhang Y. Cadmium-induced activation of high osmolarity glycerol pathway through its Sln1 branch is dependent on the MAP kinase kinase kinase Ssk2, but not its paralog Ssk22, in budding yeast. *FEMS Yeast Res*. 2014;14:1263–72.
18. Luo, C, Cao C, Jiang L. The endosomal sorting complex required for transport (ESCRT) is required for the sensitivity of yeast cells to nickel ions in *Saccharomyces cerevisiae*. *FEMS Yeast Res* 2016;16(3). pii: fow028.
19. Du J, Cao C, Jiang L. Genome-scale genetic screen of lead ion-sensitive gene deletion mutations in *Saccharomyces cerevisiae*. *Gene*. 2015;563:155–9.
20. Martin DC, Kim H, Mackin NA, Maldonado-Báez L, Evangelista CC Jr, Baudry VG, Dudgeon DD, Naiman DQ, Erdman SE, Cunningham KW. New regulators of a high affinity Ca<sup>2+</sup> influx system revealed through a genome-wide screen in yeast. *J Biol Chem*. 2011;286:10744–54.
21. Zhao Y, Du J, Zhao G, Jiang L. Activation of calcineurin is mainly responsible for the calcium sensitivity of gene deletion mutations in the genome of budding yeast. *Genomics*. 2013;101:49–56.
22. Zhang L, Liu N, Ma X, Jiang L. The transcriptional control machinery as well as the cell wall integrity and its regulation are involved in the detoxification of the organic solvent dimethyl sulfoxide in *Saccharomyces cerevisiae*. *FEMS Yeast Res*. 2013;13:200–18.
23. Zhao J, Lin W, Ma X, Lu Q, Ma X, Bian G, Jiang L. The protein kinase Hal5p is the high-copy suppressor of lithium-sensitive mutations of genes involved in sporulation and meiosis as well as ergosterol biosynthesis in *Saccharomyces cerevisiae*. *Genomics*. 2010;95:290–8.
24. Xiong B, Zhang L, Xu H, Yang Y, Jiang L. Cadmium induces the activation of cell wall integrity pathway in budding yeast. *Chem Biol Interact*. 2015;240:316–23.
25. Xu H, Whiteway H, Jiang L. The tricarboxylic acid cycle, cell wall integrity pathway, cytokinesis and intracellular pH homeostasis are involved in the sensitivity of *Candida albicans* cells to high levels of extracellular calcium. *Genomics*. 2018. <https://doi.org/10.1016/j.ygeno.2018.08.001>.
26. Jiang L, Niu S, Clines KL, Burke DJ, Sturgill TW. Analyses of the effects of Rck2p mutants on Pbs2p<sup>DD</sup>-induced toxicity in *Saccharomyces cerevisiae* identify a MAP kinase docking motif, and unexpected functional inactivation due to acidic substitution of T379. *Mol Genet Genomics*. 2004;271:208–19.
27. Araki Y, Wu H, Kitagaki H, Akao T, Takagi H, Shimoi H. Ethanol stress stimulates the Ca<sup>2+</sup>-mediated calcineurin/Crz1 pathway in *Saccharomyces cerevisiae*. *J Biosci Bioeng*. 2009;10:71–6.
28. Zhao Y, Du J, Xiong B, Xu H, Jiang L. ESCRT components regulate the expression of the ER/Golgi calcium pump gene *PMR1* through the Rim101/Nrg1 pathway in budding yeast. *J Mol Cell Biol*. 2013;5:336–44.
29. Jiang L, Wang J, Asghar F, Snyder N, Cunningham KW. CaGdt1 plays a compensatory role for the calcium pump CaPmr1 in the regulation of calcium signaling and cell wall integrity signaling in *Candida albicans*. *Cell Commun Signal*. 2018c;16:33.
30. Zhao Y, Xiong B, Xu H, Jiang L. Expression of *NYV1* encoding the negative regulator of Pmc1 activity is repressed by two transcriptional repressors Nrg1 and Mig1. *FEBS Lett*. 2014;588:3195–201.
31. Yan H, Zhao Y, Jiang L. The putative transcription factor CaRtg3 is involved in tolerance to cations and antifungal drugs as well as serum-induced filamentation in *Candida albicans*. *FEMS Yeast Res*. 2014;14:614–23.
32. Hilioti Z, Gallagher DA, Low-Nam ST, Ramaswamy P, Gajer P, Kingsbury TJ, Birchwood CJ, Levchenko A, Cunningham KW. GSK-3 kinases enhance calcineurin signaling by phosphorylation of RCNs. *Genes Dev*. 2004;18:35–47.
33. Cunningham KW, Fink GR. Calcineurin-dependent growth control in *Saccharomyces cerevisiae* mutants lacking *PMG1*, a homolog of plasma membrane Ca<sup>2+</sup> ATPases. *J Cell Biol*. 1994;124:351–63.
34. Cunningham KW, Fink GR. Calcineurin inhibits VCX1-dependent H<sup>+</sup>/Ca<sup>2+</sup> exchange and induces Ca<sup>2+</sup> ATPases in *Saccharomyces cerevisiae*. *Mol Cell Biol*. 1996;16:2226–2237.
35. Moser MJ, Geiser JR, Davis TN. Ca<sup>2+</sup>-calmodulin promotes survival of pheromone-induced growth arrest by activation of calcineurin and Ca<sup>2+</sup>-calmodulin-dependent protein kinase. *Mol Cell Biol*. 1996;16:4824–31.
36. Pausch MH, Kaim D, Kunisawa R, Admon A, Thorer J. Multiple Ca<sup>2+</sup>-calmodulin-dependent protein kinase genes in a unicellular eukaryote. *EMBO J*. 1991;10:1511–22.
37. Stathopoulos AM, Cyert MS. Calcineurin acts through the *CRZ1/TCN1*-encoded transcription factor to regulate gene expression in yeast. *Genes Dev*. 1997;11:3432–44.
38. Alemany V, Sanchez-Piris M, Bachs O, Aligue R. Cmk2, a novel serine/threonine kinase in fission yeast. *FEBS Lett*. 2002;524:79–86.
39. Li X, Huang X, Zhao J, Zhao J, Wei Y, Jiang L. The MAP kinase-activated protein kinase Rck2p plays a role in rapamycin sensitivity in *Saccharomyces cerevisiae* and *Candida albicans*. *FEMS Yeast Res*. 2008;8:715–24.
40. Matheos DP, Kingsbury TJ, Ahsan US, Cunningham KW. Tcn1p/Crz1p, a calcineurin-dependent transcription factor that differentially regulates gene expression in *Saccharomyces cerevisiae*. *Genes Dev*. 1997;11:3445–58.
41. Dickson RC, Sumanasekera C, Lester RL. Functions and metabolism of sphingolipids in *Saccharomyces cerevisiae*. *Prog Lipid Res*. 2006;45:447–65.
42. Rahar B, Chawla S, Pandey S, Bhatt AN, Saxena S. Sphingosine-1-phosphate pretreatment amends hypoxia-induced metabolic dysfunction and impairment of myogenic potential in differentiating C2C12 myoblasts by stimulating viability, calcium homeostasis and energy generation. *J Physiol Sci*. 2018;68:137–51.
43. Keul P, van Borren MM, Ghanem A, Müller FU, Baartscheer A, Verkerk AO, Stümpel F, Schulte JS, Hamdani N, Linke WA, van Loenen P, Matus M, Schmitz W, Stypmann J, Tiemann K, Ravesloot JH, Alewijnse AE, Hermann S, Spijkers LJ, Hiller KH, Herr D, Heusch G, Schäfers M, Peters SL, Chun J, Levkau B. Sphingosine-1-phosphate receptor 1 regulates cardiac function by modulating Ca<sup>2+</sup> sensitivity and N<sup>+</sup>/H<sup>+</sup> exchange and mediates protection by ischemic preconditioning. *J Am Heart Assoc* 2016;5(5). pii: e003393.
44. Ihlefeld K, Claas RF, Koch A, Pfeilschifter JM, Meyer Zu Heringdorf D. Evidence for a link between histone deacetylation and Ca<sup>2+</sup> homeostasis in sphingosine-1-phosphate lyase-deficient fibroblasts. *Biochem J*. 2012;447:457–64.
45. Pijnappel WW, Schaft D, Roguev A, Shevchenko A, Tekotte H, Wilm M, Rigaut G, Séraphin B, Aasland R, Stewart AF. The *S. cerevisiae* SET3 complex includes two histone deacetylases, Hos2 and Hst1, and is a meiotic-specific repressor of the sporulation gene program. *Genes Dev*. 2001;15:2991–3004.
46. Kim T, Xu Z, Clauder-Münster S, Steinmetz LM, Buratowski S. Set3 HDAC mediates effects of overlapping noncoding transcription on gene induction kinetics. *Cell*. 2012;150:1158–69.
47. Dai YS, Xu J, Molkenin JD. The DnaJ-related factor Mrj interacts with nuclear factor of activated T cells c3 and mediates transcriptional repression through class II histone deacetylase recruitment. *Mol Cell Biol*. 2005;25:9936–48.
48. Cunningham KW. Acidic calcium stores of *Saccharomyces cerevisiae*. *Cell Calcium*. 2011;50:129–38.
49. Dudgeon DD, Zhang N, Ositelu OO, Kim H, Cunningham KW. Nonapoptotic death of *Saccharomyces cerevisiae* cells that is stimulated by Hsp90 and inhibited by calcineurin and Cmk2 in response to endoplasmic reticulum stresses. *Eukaryot Cell*. 2008;7:2037–51.
50. Mehta S, Li H, Hogan PG, Cunningham KW. Domain architecture of the regulators of calcineurin (RCANs) and identification of a divergent RCAN in yeast. *Mol Cell Biol*. 2009;29:2777–93.

**Ready to submit your research? Choose BMC and benefit from:**

- fast, convenient online submission
- thorough peer review by experienced researchers in your field
- rapid publication on acceptance
- support for research data, including large and complex data types
- gold Open Access which fosters wider collaboration and increased citations
- maximum visibility for your research: over 100M website views per year

**At BMC, research is always in progress.**

Learn more [biomedcentral.com/submissions](https://biomedcentral.com/submissions)

