


CORRECTION

Open Access



# Correction to: Aiduqing formula inhibits breast cancer metastasis by suppressing TAM/CXCL1-induced Treg differentiation and infiltration

Jing Li<sup>1,2†</sup>, Shengqi Wang<sup>1,2,3†</sup>, Neng Wang<sup>1,3,4</sup>, Yifeng Zheng<sup>1,2</sup>, Bowen Yang<sup>1,2</sup>, Xuan Wang<sup>1,2</sup>, Juping Zhang<sup>1,2</sup>, Bo Pan<sup>1,2</sup> and Zhiyu Wang<sup>1,2,3,4,5\*</sup> 

**Correction to: Cell Commun Signal**19, 89 (2021)

<https://doi.org/10.1186/s12964-021-00775-2>

Following publication of the original article [1], the authors found an error in Fig. 6D. Unintentionally, the same lung was mistakenly displayed twice in the TAM group (the upper and the lower image). In order to

further verify the accuracy of the study, we would like to provide the revised Fig. 6D. This correction does not influence the description, interpretation or the original conclusions of the article.

---

The original article can be found online at <https://doi.org/10.1186/s12964-021-00775-2>.

\*Correspondence: wangzhiyu976@126.com

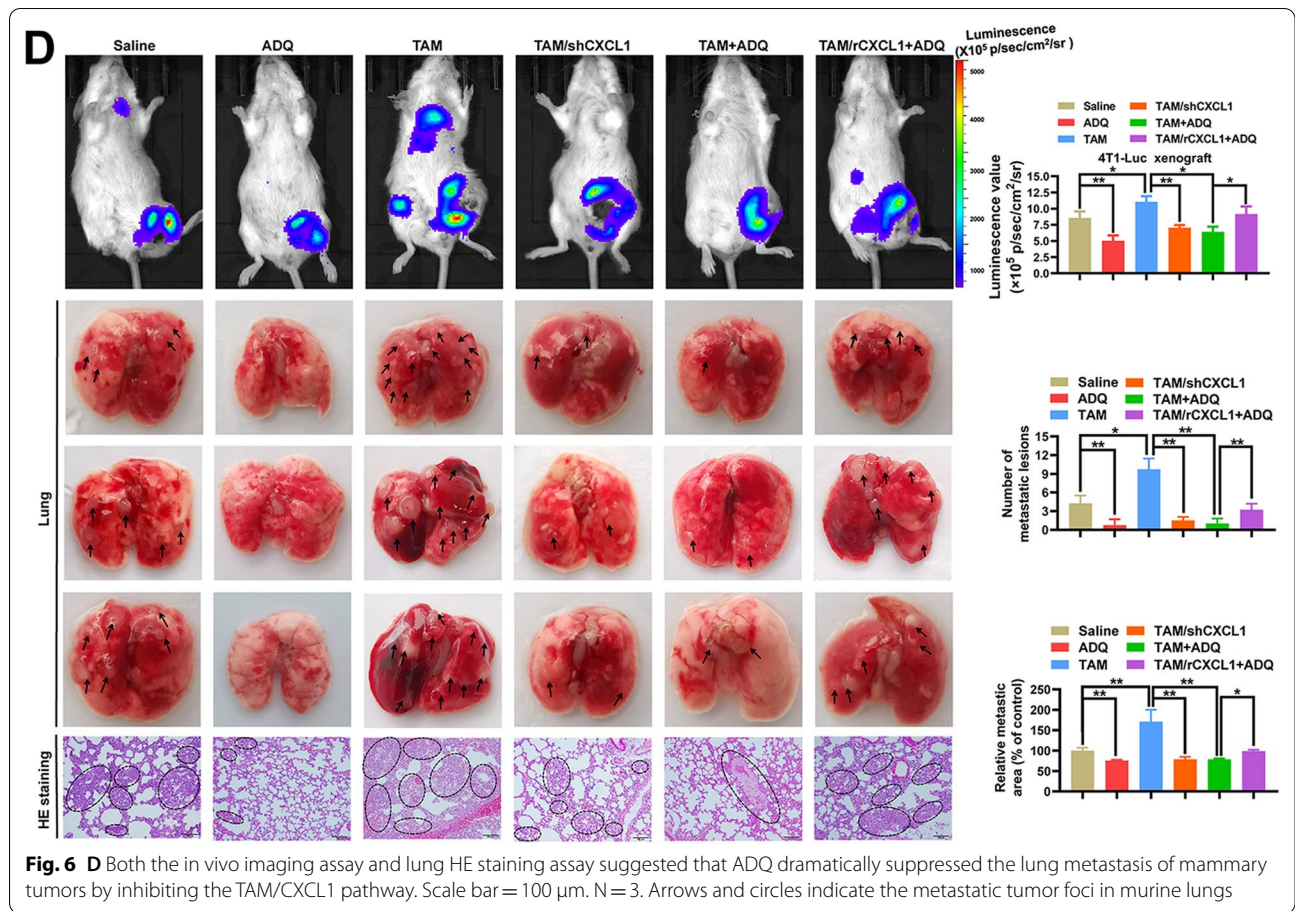
†Jing Li and Shengqi Wang have contributed equally to this work

<sup>1</sup>The Research Center of Integrative Cancer Medicine, Discipline of Integrated Chinese and Western Medicine, The Second Clinical College of Guangzhou University of Chinese Medicine, Guangzhou, Guangdong, China

Full list of author information is available at the end of the article



© The Author(s) 2021. **Open Access** This article is licensed under a Creative Commons Attribution 4.0 International License, which permits use, sharing, adaptation, distribution and reproduction in any medium or format, as long as you give appropriate credit to the original author(s) and the source, provide a link to the Creative Commons licence, and indicate if changes were made. The images or other third party material in this article are included in the article's Creative Commons licence, unless indicated otherwise in a credit line to the material. If material is not included in the article's Creative Commons licence and your intended use is not permitted by statutory regulation or exceeds the permitted use, you will need to obtain permission directly from the copyright holder. To view a copy of this licence, visit <http://creativecommons.org/licenses/by/4.0/>. The Creative Commons Public Domain Dedication waiver (<http://creativecommons.org/publicdomain/zero/1.0/>) applies to the data made available in this article, unless otherwise stated in a credit line to the data.



**Author details**

<sup>1</sup>The Research Center of Integrative Cancer Medicine, Discipline of Integrated Chinese and Western Medicine, The Second Clinical College of Guangzhou University of Chinese Medicine, Guangzhou, Guangdong, China. <sup>2</sup>Guangdong Provincial Key Laboratory of Clinical Research On Traditional Chinese Medicine Syndrome, Guangdong Provincial Academy of Chinese Medical Sciences, Guangdong Provincial Hospital of Chinese Medicine, Guangzhou, Guangdong, China. <sup>3</sup>Guangdong-Hong Kong-Macau Joint Lab On Chinese Medicine and Immune Disease Research, Guangzhou University of Chinese Medicine, Guangzhou, Guangdong, China. <sup>4</sup>The Research Center for Integrative Medicine, School of Basic Medical Sciences, Guangzhou University of Chinese Medicine, Guangzhou, Guangdong, China. <sup>5</sup>State Key Laboratory of Dampness, Syndrome of Chinese Medicine, The Second Affiliated Hospital of Guangzhou University of Chinese Medicine, Guangzhou 510120, China.

**Reference**

- Li J, Wang S, Wang N, et al. Aiduqing formula inhibits breast cancer metastasis by suppressing TAM/CXCL1-induced Treg differentiation and infiltration. *Cell Commun Signal.* 2021;19:89. <https://doi.org/10.1186/s12964-021-00775-2>.

**Publisher's Note**

Springer Nature remains neutral with regard to jurisdictional claims in published maps and institutional affiliations.