

CORRECTION

Open Access

Correction: The role of LPA and YAP signaling in long-term migration of human ovarian cancer cells

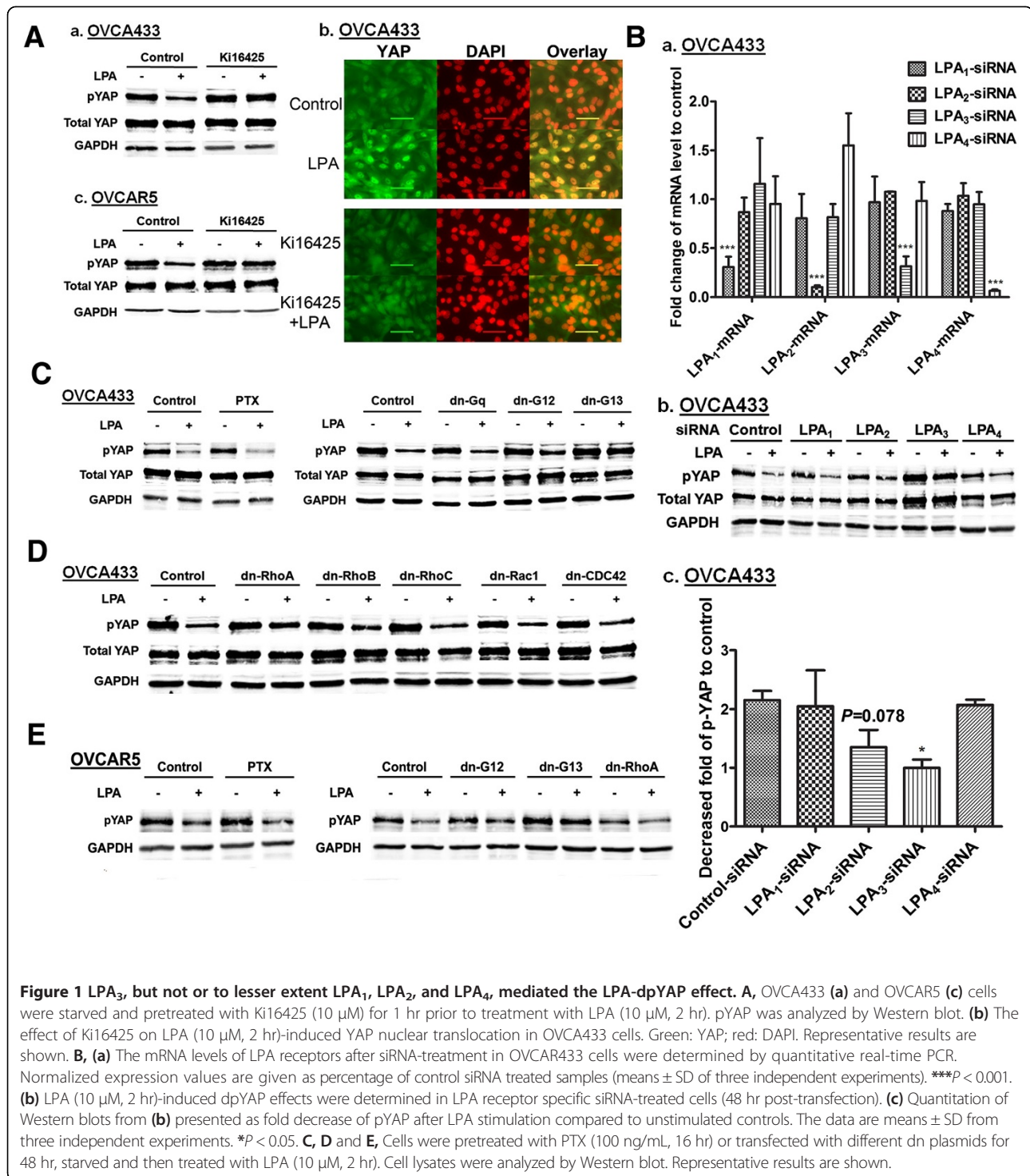
Hui Cai^{1,2} and Yan Xu^{2*}

Correction

In the original paper published [1], there is a mistake in Figure 4. Figure 4D and Figure 4E are the same, but Figure 4E should have been different (the figures show two different cell lines). Figure 1 in this correction article is the correct version of Figure 4 from the original article [1]. The figure legend does not need to be changed.

* Correspondence: xu2@iupui.edu

²Department of Obstetrics and Gynecology, Indiana University School of Medicine, 975 W. Walnut St. IB355A, Indianapolis, IN 46202, USA
Full list of author information is available at the end of the article



Author details

¹First Affiliated Hospital, Xi'an Jiaotong University, Xi'an, China. ²Department of Obstetrics and Gynecology, Indiana University School of Medicine, 975 W. Walnut St. IB355A, Indianapolis, IN 46202, USA.

References

1. Cai H, Xu Y: The role of LPA and YAP signaling in long-term migration of human ovarian cancer cells. *Cell Communication and Signaling* 2013, **11**:31. doi:10.1186/1478-811X-11-31. PMID: 23618389.

doi:10.1186/1478-811X-11-92

Cite this article as: Cai and Xu: Correction: The role of LPA and YAP signaling in long-term migration of human ovarian cancer cells. *Cell Communication and Signaling* 2013 **11**:92.

Received: 4 December 2013 Accepted: 4 December 2013
 Published: 13 December 2013